

# SPEC SHEET + MEASUREMENTS

*Brooks Brothers*

## Brooks Brothers® Double-Knit Full-Zip. BB18210

### Product photo



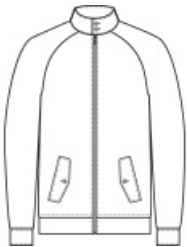
Pay homage to the epitome of casual cool in this classic jacket, allowing a broad range of movement and featuring just the right amount of pop in the details.

- 9.1-ounce, 57/43 polyester/cotton double-knit
- Cadet collar with button closure
- Faux horn buttons with Brooks Brothers logo
- Metal zipper pull with Brooks Brothers logo
- Buttoned flap pockets
- Lined raglan sleeves

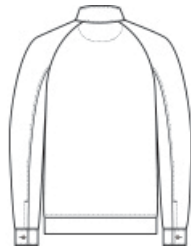
### CARE INSTRUCTIONS

Machine Wash Cold With Like Colors. Do Not Use Fabric Softener. Do Not Bleach. Tumble Dry Low. Remove Promptly. Cool Iron If Necessary.

### Sketches



front



back

# SPEC SHEET + MEASUREMENTS

*Brooks Brothers*

Brooks Brothers® Double-Knit Full-Zip. BB18210

## PRODUCT MEASUREMENTS

	XS	S	M	L	XL	2XL	3XL	4XL
Body Length at Back	27 1/2	28	28 1/2	29	29 1/2	30	30 1/2	31
Chest	19 1/2	21	22 1/2	24	26	28	30 1/2	33 1/2
Raglans and Dolmans Sleeve Length	34 1/4	35	35 3/4	36 1/2	37 1/4	38	38 3/4	39 1/2

**Body Length at Back:** Measured from high point shoulder to finished hem at back.

**Chest:** Measured across the chest one inch below armhole when laid flat.

**Raglans and Dolmans Sleeve Length:** Measure from neck edge to finished hem.

## SIZE CHARTS

	XS	S	M	L	XL	2XL	3XL	4XL
Chest	32-34	35-37	38-40	41-43	44-47	48-51	52-56	57-61

# SPEC SHEET + MEASUREMENTS

*Brooks Brothers*

Brooks Brothers® Double-Knit Full-Zip. BB18210

## HOW TO MEASURE

---



### CHEST

Measure under the arm and around the fullest part of the chest with arms down, keeping tape horizontal.

## COLORS

---



Deep Black  
PMS BLACK  
C



Night Navy  
PMS 4280C



Windsor Grey  
PMS 426C