

SPEC SHEET + MEASUREMENTS

Brooks Brothers

Brooks Brothers® Women's Cotton Stretch Long Cardigan Sweater. BB18403

Product photo



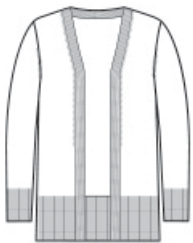
This timeless cardigan features an open front and longer length for easy wear-over-anything style.

- 70/30 pima cotton/nylon
- Full-fashioned throughout
- 1x1 rib neck
- Wide rib at cuffs and hem

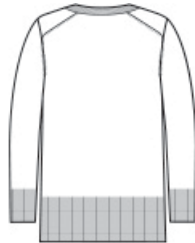
CARE INSTRUCTIONS

Machine Wash Cold With Like Colors. Gentle Cycle. Only Non-Chlorine Bleach When Needed. Reshape And Lay Flat To Dry. Cool Iron If Necessary.

Sketches



front



back

SPEC SHEET + MEASUREMENTS

Brooks Brothers

Brooks Brothers® Women's Cotton Stretch Long Cardigan Sweater. BB18403

PRODUCT MEASUREMENTS

	XS	S	M	L	XL	2XL	3XL	4XL
Size	2	4/6	8/10	12/14	16/18	20/22	24/26	28/30
Body Length at Back	27 1/2	28	28 1/2	29	29 1/2	30	30 1/2	31
Bust	20	21	22	23 1/2	25	26 1/2	28 1/2	30 1/2
Sleeve Length from Center Back	31	31 1/2	32	32 5/8	33 1/4	33 7/8	34 1/4	34 5/8

Body Length at Back: Measured from high point shoulder to finished hem at back.

Bust: Measured across the chest one inch below armhole when laid flat.

Sleeve Length from Center Back: Measure from Center Back neck to shoulder point to sleeve hem.

SIZE CHARTS

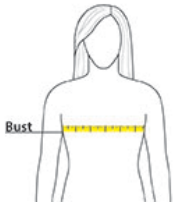
	XS	S	M	L	XL	2XL	3XL	4XL
Size	2	4/6	8/10	12/14	16/18	20/22	24/26	28/30
Bust	32-34	35-36	37-38	39-41	42-44	45-47	48-51	52-55

SPEC SHEET + MEASUREMENTS

Brooks Brothers

Brooks Brothers® Women's Cotton Stretch Long Cardigan
Sweater. BB18403

HOW TO MEASURE



BUST

Measure under the arm and around the fullest part of the bust with arms down, keeping tape horizontal.

COLORS



Charter Blue
Heather
PMS 7684C



Deep Black
PMS BLACK
C



Light Shadow
Grey Heather
PMS
HEATHER



Navy Blazer
PMS 533C