

SPEC SHEET + MEASUREMENTS

DISTRICT

District® Perfect Tri® Long Sleeve Henley. DT145

Product photo



Three yarns form a perfect easygoing look in this henley version of our popular long sleeve tee.

- 4.5-ounce (153 GSM)
- 50/25/25 polyester/combed ring spun cotton/rayon, 32 singles
- 1x1 rib knit neck and cuffs
- 3-button placket
- Center front taping
- Tear-away label

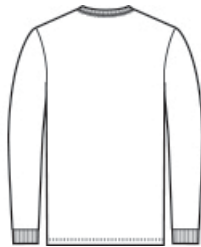
CARE INSTRUCTIONS

Machine Wash Cold With Like Colors. Only Non-Chlorine Bleach When Needed. Tumble Dry Low. Warm Iron If Necessary.

Sketches



front



back

SPEC SHEET + MEASUREMENTS



District® Perfect Tri® Long Sleeve Henley. DT145

PRODUCT MEASUREMENTS

	XS	S	M	L	XL	2XL	3XL	4XL
Body Length at Back	27	28	29	30	31	32	32 1/2	33
Chest	17 1/2	19	20 1/2	22	23 1/2	25	27	29
Sleeve Length from Center Back	33 3/4	34 1/2	35 1/4	36	36 3/4	37 1/2	38 1/4	39

Body Length at Back: Measured from high point shoulder to finished hem at back.

Chest: Measured across the chest one inch below armhole when laid flat.

Sleeve Length from Center Back: Measure from Center Back neck to shoulder point to sleeve hem.

SIZE CHARTS

	XS	S	M	L	XL	2XL	3XL	4XL
Chest	32-34	35-37	38-40	41-43	44-46	47-49	50-53	54-57

SPEC SHEET + MEASUREMENTS



District® Perfect Tri® Long Sleeve Henley. DT145

HOW TO MEASURE



CHEST

Measure under the arm and around the fullest part of the chest with arms down, keeping tape horizontal.

COLORS



Black Frost
PMS 426C



Heathered
Charcoal
PMS 7540C



Military Green
Frost
PMS 7771C



Natural



Navy Frost
PMS 2379C